

Ref (2) in list of Documents

APPENDIX P



NORTH STAFFORDSHIRE RAILWAY
(NEW WORKS.)



BOOK OF REFERENCE

TO

Plans and Sections.

SESSION 1864.

BURCHELLS,

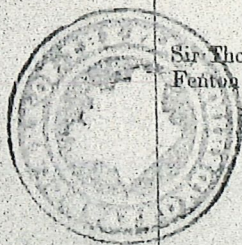
5, Broad Sanctuary,


Westminster.

(NEW WORKS)
WAY

Parish of Audley—continued.

No. on Plan.	Description of Property.	Owners or Reputed Owners.	Lessees or Reputed Lessees.	Occupiers.
150	Field	John Jones as to surface Sir Thomas Fletcher Fenton Boughey, baronet, as to mines	William Rigby John Booth Daniel Booth John Booth, junior Charles Hilditch, as to mines	John Whalley
151	Field	John Jones as to surface Sir Thomas Fletcher Fenton Boughey, baronet, as to mines	William Rigby John Booth Daniel Booth John Booth, junior Charles Hilditch, as to mines	John Whalley
152	Field	Sir Thomas Fletcher Fenton Boughey, baronet	William Rigby John Booth Daniel Booth John Booth, junior Charles Hilditch, as to mines	Joseph Burgess
153	Field, occupation roads, ponds, and public footpath	Sir Thomas Fletcher Fenton Boughey, baronet Surveyors of Highways	William Rigby John Booth Daniel Booth John Booth, junior Charles Hilditch, as to mines	Joseph Burgess
154	Coal pits, engine, machinery, buildings, occupation roads, public footpath, tramways, and coalpit bank	Sir Thomas Fletcher Fenton Boughey, baronet Surveyors of Highways	William Rigby John Booth Daniel Booth John Booth, junior Charles Hilditch, as to mines	William Rigby John Booth Daniel Booth John Booth, junior Charles Hilditch Joseph Burgess
155	Occupation road	Sir Thomas Fletcher Fenton Boughey, baronet	William Rigby John Booth Daniel Booth John Booth, junior Charles Hilditch, as to mines	William Rigby John Booth Daniel Booth John Booth, junior Charles Hilditch Joseph Burgess
156	Field, occupation road, and air chimney	Sir Thomas Fletcher Fenton Boughey, baronet	William Rigby John Booth Daniel Booth John Booth, junior Charles Hilditch, as to mines	Joseph Burgess John Matthews



152	Field		Sir Thomas Fletcher Fenton Boughby, baronet	William Rigby John Booth Daniel Booth John Booth, junior Charles Hibditch, as to mines	Joseph Burgess
153	Field, occupation roads, ponds, and public footpath		Sir Thomas Fletcher Fenton Boughby, baronet Surveyors of Highways	William Rigby John Booth Daniel Booth John Booth, junior Charles Hibditch, as to mines	Joseph Burgess
154	Coal pits, engines, machinery, buildings, occupation roads, public footpath, tramways, and coalpit bank		Sir Thomas Fletcher Fenton Boughby, baronet Surveyors of Highways	William Rigby John Booth Daniel Booth John Booth, junior Charles Hibditch, as to mines	William Rigby John Booth Daniel Booth John Booth, ju Charles Hibditch Joseph Burgess

Ref No 3 in list of Documents

3

Wm D. Jones
Hampshire Railway.

W.D. JONES

Prms and Sections.

SESSION 1864.

CHARLES R CHEFFINS
LONDON

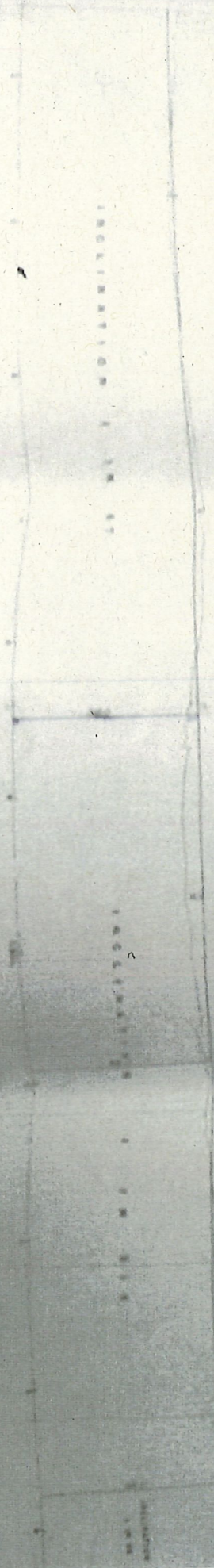
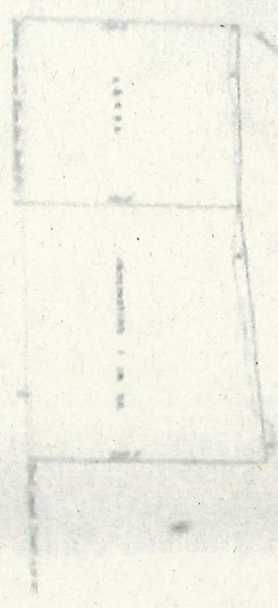
COUNTY OF STARBUCK

RAILWAY NO. 1

F A N I S O F F A I D L E Y

INCORPORATED IN 1887

INCORPORATED IN 1888



COUNTY OF STAFFORD

RAILWAY N° 3

P
A
R
I
S
H

O
F

